



Real time data integrity and print quality inspection for mail processing, secure printing and label inspection applications.

Discovery MultiScan is the latest generation of Print and Mail Integrity Solutions from Lake Image Systems. Based on our new Discovery platform it leads the way in performance, ease of use and flexibility.

Our MultiScan Manager pulls together the images and data from a wide variety of camera and scanner based technologies and allows the implementation of any number of Discovery software tools to read, control, inspect, verify, log and report – providing 100% quality inspection and print data integrity.

Read

- OCR (Optical Character Recognition)
- Barcode
- 2D, QR Code, PDF417
- Postal Barcodes
- OMR

Inspect

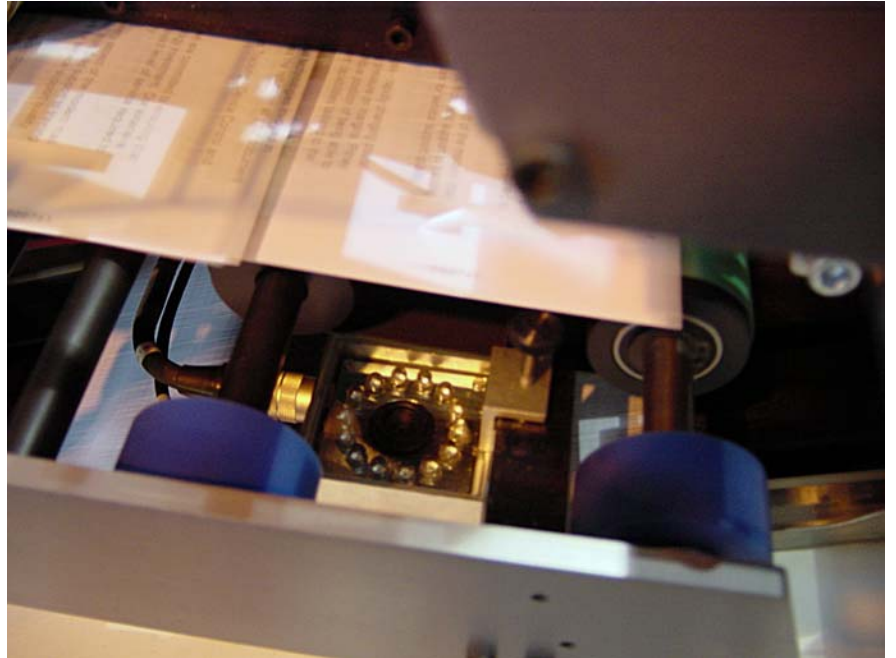
- Barcode grading to ASNI / DIN standards
- IMB Verification
- Address masking through window envelope
- Presence of indicia and postal marks
- Scratch panel for PIN numbering
- Print registration targets and density

Control

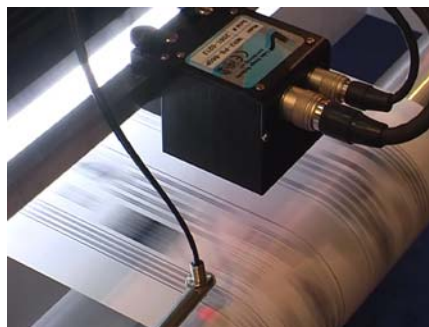
- Document collation
- Selective inserting
- Batch/stack , Edge Mark, Mailsort
- Read and Print Inkjet control
- Document and print matching

Verify

- Correct sequencing
- Print File reconciliation
- Identify duplicate and missing pieces



- Simultaneous print quality and data integrity verification
- Real time identification of print errors
- Piece level tracking
- Integrity and productivity reporting
- Network multiple processes for integrity management in a shared job environment with Discovery Enterprise.
- ePedigree verification
- Barcode grading, in-line real time to ISO and ANSI standards.



Log and Report

- 100% Proof of printing / mailing
- Operator / job / production data
- Full networked reporting



Input Devices

Area Scan Cameras MaxRead, GigE, Firewire, Analogue >2M pixels

Line Scan Cameras Up to 8K line scan

Triggering Leading edge sensor Encoder (5000ppr)

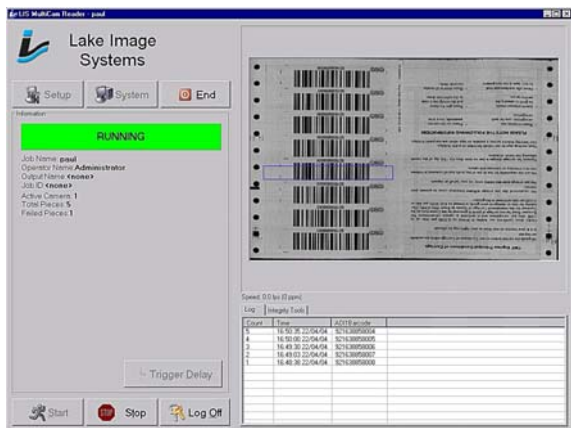
Processor

Operating System Windows™ XP

Process Time >50 reads per second

Chassis Standard PC or Industrial Rack (IP54 rated) Power 110-230VAC

Approvals CE/UL Certified



Supported Code formats

OCR Fully font trainable by system operator Skew: ±15 Deg

Barcode

- EAN 13
- UPC A
- Code 128
- Code 93
- 2/5 discrete
- EAN 8
- UPC E
- Code 39
- 2/5 interleaved
- Pharmacode

2D

- Datamatrix
- QR Code
- PDF417

Postal Barcodes

- US Post Office Postnet Code
- UK Post Office Four State Code
- Australian Post Office
- Japanese Post Office Code
- Planet Code

Barcode Grading

- To ISO/IEC 15416:2000
- UPC A
- Code 128
- 2/5 interleaved
- UPC E
- Code 39
- Codabar

Proven Installations

- Inserters / Cutters / Collators
- Bindary Lines
- Booklet Makers
- Plastic Card Attachers
- Polywrappers
- Digital Printers
- Hi-speed Inkjet Printers
- Rewinders
- Narrow Web / Label Presses
- Litho and Offset Presses

UK & Europe



Lake Image Systems Ltd

The Forum Icknield Way Tring Hertfordshire HP23 4JX UK
T: +44 (0) 1442 892700 F: +44 (0) 1442 892792 E:sales@lakeimage.com

Lake Image Systems France

165 Avenue du Prado 13272 MARSEILLE CEDEX 08 FRANCE
T: +33 (0) 491 17 90 62 F:+33 (0) 491 17 90 63 E: euLIS@lakeimage.com

Lake Image Systems, Inc.

205 Summit Point Drive Suite 2 Henrietta N.Y. 14467 USA
T: +1 585 321 3630 F: +1 585 321 3788 E:salesna@lakeimage.com

Lake Image Systems Asia

Block 4008 Ang Mo Kio Ave 10, #02-19 Techplace 1 Singapore 569625
T: +65 9722 3490 F: +44 1442 892 700 E: LISAsia@lakeimage.com

The Americas

Asia



Lake Image Systems

www.lakeimage.com