



Application : Real time data integrity and print quality inspection for Cartes manufacturing applications.

Discovery MultiScan is the latest generation of Print and Mail Integrity Solutions from Lake Image Systems. Based on our new Discovery platform it leads the way in performance, ease of use and flexibility.

Our MultiScan Manager pulls together the images and data from a wide variety of camera and scanner based technologies and allows the implementation of any number of Discovery software tools to read, control, inspect, verify the data from the data printed or embossed, the data from the chip or the stripe – providing 100% quality inspection and print data integrity.



Read

- OCR (Optical Character Recognition)
- Barcode
- 2D, QR Code, PDF417
- Magnetics stripes
- Embossed characters

Inspect

- Barcode grading to ASNI / DIN standards
- Scratch Off
- Matching between data on the carte

Control

- Sequence
- Double
- Read and Print

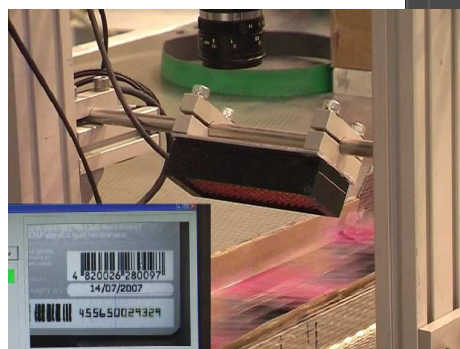
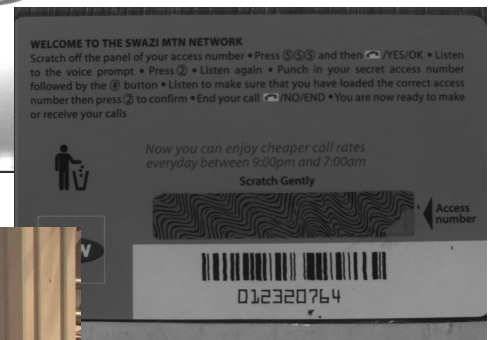
Verify

- Print File reconciliation
- Identify duplicate and missing pieces

Log and Report

- 100% Proof of printing / mailing
- Operator / job / production data
- Full networked reporting

- Simultaneous print quality and data integrity verification
- Real time identification of print errors
- Piece level tracking
- Integrity and productivity reporting
- Network multiple processes for integrity management in a shared job environment with Discovery Enterprise.
- Embossing verification
- Barcode grading, in-line real time to ISO and ANSI standards.





Input Devices

Area Scan Cameras MaxRead, GigE, Firewire, Analogue
>2M pixels

Triggering Leading edge sensor
Encoder (5000ppr)

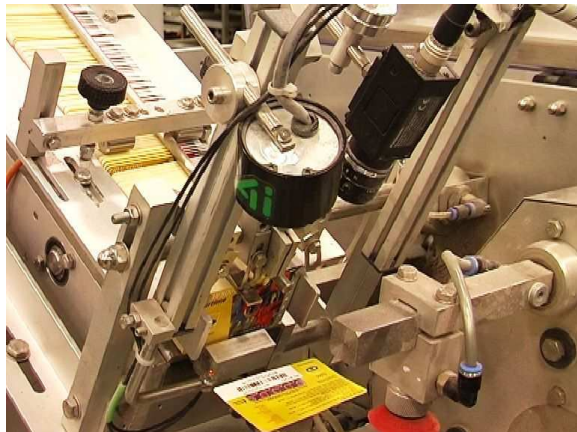
Processor

Operating System Windows™ XP

Process Time >50 reads per second

Chassis Standard PC or Industrial Rack (IP54 rated)
Power 110-230VAC

Approvals CE/UL Certified



Supported Code formats

OCR Fully font trainable by system operator
Skew: ±15 Deg
Embossed characters
Magnetic stripe

Barcode

- EAN 13
- UPC A
- Code 128
- Code 93
- 2/5 discrete
- EAN 8
- UPC E
- Code 39
- 2/5 interleaved
- Pharmacode

2D

- Datamatrix
- QR Code
- PDF417

Barcode Grading

- To ISO/IEC 15416:2000
- UPC A
- Code 128
- 2/5 interleaved
- UPC E
- Code 39
- Codabar

Control

- Sequence
- Matching
- Embossing quality
- File Audit
- ...

Proven Installations

- DataCard
- Mattica
- CIM
- Ga-Vehren
- ...

Scalability / Upgradability

Discovery MultiScan uses the same hardware and software platform as Lake Image System's comprehensive automated defect detection system, Discovery PQ. With a software upgrade, Discovery MultiScan transforms into an automated solution which identifies, displays, records and enables action upon print quality defects such as colour deterioration, hickeys, blemishes, streaks and voids.

UK & Europe



The Americas

Asia

Lake Image Systems Ltd

The Forum Icknield Way Tring Hertfordshire HP23 4JX UK
T: +44 (0) 1442 892700 F: +44 (0) 1442 892792 E:sales@lakeimage.com

Lake Image Systems France

165 Avenue du Prado 13272 MARSEILLE CEDEX 08 FRANCE
T: +33 (0) 491 17 90 62 F:+33 (0) 491 17 90 63 E: euLIS@lakeimage.com

Lake Image Systems, Inc.

205 Summit Point Drive Suite 2 Henrietta N.Y. 14467 USA
T: +1 585 321 3630 F: +1 585 321 3788 E:salesna@lakeimage.com

Lake Image Systems Asia

Block 4008 Ang Mo Kio Ave 10, #02-19 Techplace 1 Singapore 569625
T: +65 9722 3490 F: +44 1442 892 700 E: LISAsia@lakeimage.com



Lake Image Systems

www.lakeimage.com